



## ASPEKT



**969,00 €**

SKU: 10670

Brand: Ethnicraft

Boiserie Riva srl  
00199 Roma - Via Nemorense 37/c  
Tel. +39068845 253- P.IVA e C.F 05 229581003  
info@riva.it - <https://www.riva.it>

Showroom  
20159 Milano - Via L. Porro Lambertenghi 18  
Tel. +39026883199  
milano@riva.it

Showroom  
00199 Roma - Via Nemorense 37/c  
Tel. +39068845 253  
roma@riva.it



## GALLERY IMAGES



With balanced proportions and an inviting shape, the Aspekt armchair is a bridge between past and present. Carefully designed to create harmony between form and function, its compact structure offers generous seating with excellent support. The discreet details and clean lines make it a versatile addition to any space; it is perfect in both classic and contemporary settings.

- Made of dark brown stained teak with varnished finish and high-density foam with Warm Ash colour eco-fabric upholstery

For over twenty-five years, Ethnicraft has been making **furniture and decorative objects of timeless modern beauty**. The Belgium-based company firmly believes in creating high-quality **solid wood** furniture that will last for generations and resist trends. The wood used in production comes from **responsibly and carefully managed forests**. Ethnicraft's goal is to emphasize the **essence** of furniture, creating furnishings characterized by simple, **essential lines and a distinctly minimal style**.

**Boiserie Riva srl**  
00199 Roma - Via Nemorense 37/c  
Tel. +39068845 253- P.IVA e C.F 05 229581003  
info@riva.it - <https://www.riva.it>

**Showroom**  
20159 Milano - Via L. Porro Lambertenghi 18  
Tel. +39026883199  
milano@riva.it

**Showroom**  
00199 Roma - Via Nemorense 37/c  
Tel. +39068845 253  
roma@riva.it



## ADDITIONAL INFORMATION

<b>Dimensioni divano</b>	67x78x72
<b>Tessuto</b>	Warm Ash
<b>Essenza</b>	Black stained teak

**Boiserie Riva srl**  
00199 Roma - Via Nemorense 37/c  
Tel. +39068845 253- P.IVA e C.F 05 229581003  
info@riva.it - <https://www.riva.it>

**Showroom**  
20159 Milano - Via L. Porro Lambertenghi 18  
Tel. +39026883199  
milano@riva.it

**Showroom**  
00199 Roma - Via Nemorense 37/c  
Tel. +39068845 253  
roma@riva.it



## THE PRIMARY PRINCIPLE

Boiserie Riva S.r.l pays the utmost attention to people's well-being and safety, offering furnishings in perfect balance between a culture of personal health and an eco-sustainable philosophy.

**HEALTH AND SAFETY MORE THAN NATURAL** Riva controls the total of the production process: planning and design, selection and purchase of timbers, craftsmanship and finishing. Every detail is entrusted to expert hands treasure experience dating back to the 1920s, handed down and updated, divorced from traditional industrial processes.

## RIVA: HOW IT OPERATES

- Boiserie Riva S.r.l uses only solid wood from controlled cultivation, whose processing and finishing stages are marked by total respect for the environment, and chooses only 100% natural fabrics and padding.
- Boiserie Riva S.r.l adheres to Federmobili's Code of Ethics.
- Boiserie Riva S.r.l pays special attention to Corporate Social Responsibility.

## RIVA: AWARDS

- Boiserie Riva S.r.l joins the Vero Legno Consortium, a trademark registered in all countries of the European Union, guaranteeing and authenticity of wood products, protecting the consumer.
- Boiserie Riva S.r.l in 2010, thanks to its commitment to research and production of eco-sustainable furniture, became Legambiente Point. Each month Legambiente sponsors a RivaViva product.
- Cristina Riva joins Federmobili's Leader Group as a national adviser.
- Boiserie Riva S.r.l is a partner of the Best Up Circuit, for the promotion of sustainable living.
- Boiserie Riva S.r.l in June 2017 received the Interior Architecture Award as part of the Rome Architecture Award of the Order of Architects of Lazio with the house "Doubling Home."
- Boiserie Riva S.r.l complies with the requirements of ISO 9001:2015, ISO 14001:2015, ISO 45001:2018



**Boiserie Riva srl**  
00199 Roma - Via Nemorense 37/c  
Tel. +39068845 253- P.IVA e C.F 05 229581003  
info@riva.it - <https://www.riva.it>

**Showroom**  
20159 Milano - Via L. Porro Lambertenghi 18  
Tel. +39026883199  
milano@riva.it

**Showroom**  
00199 Roma - Via Nemorense 37/c  
Tel. +39068845 253  
roma@riva.it

# Tessuti Innovation Living

Tutti i tessuti sono certificati Oeko-Tex®



512 Elegance, Blue



511 Elegance, Red



510 Elegance, Orange



412 Esina, Rust Orange



688 Silvershine



411 Esina, Cedar Brown



358 Taura, Chocco



359 Taura, Cappuccino



351 Taura, Slate Grey



357 Taura, Off White



350 Taura, Deep Grey



282 Avella, Warm Grey



280 Avella, Sand



281 Avella, Pine Green



595 Corduroy, Burnt Orange



537 Bouclé, Blue

# Tessuti Innovation Living

Tutti i tessuti sono certificati Oeko-Tex®



535 Bouclé, Forest Green



594 Corduroy, Ivory



530 Bouclé, Taupe



536 Bouclé, Ochre



301 Weda, Rust



300 Weda, Sand



302 Weda, Blue



539 Bouclé, Beige



529 Bouclé, Charcoal



527 Mixed Dance, Natural



565 Twist, Granite



563 Twist, Charcoal



551 Faunal, Brown



550 Faunal, Black



531 Bouclé, Off White



533 Bouclé, Ash Grey

# Tessuti Innovation Living

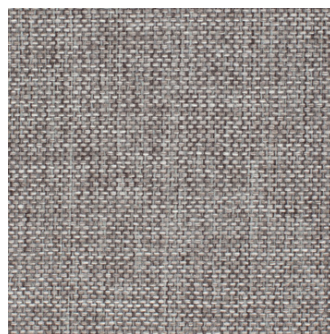
Tutti i tessuti sono certificati Oeko-Tex®



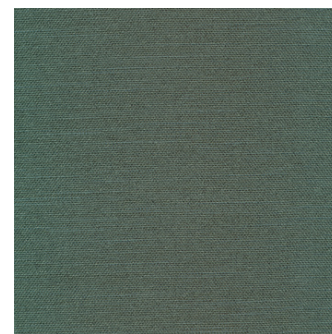
525 Mixed Dance, Light Blue



528 Mixed Dance, Blue



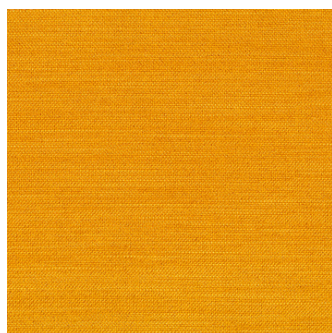
521 Mixed Dance, Grey



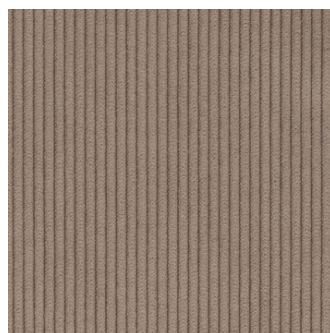
518 Elegance, Green



316 Cordufine, Pine Green



507 Elegance, Burned Curry



318 Cordufine, Beige



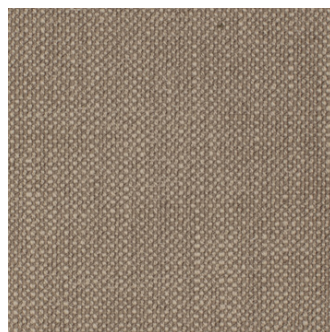
217 Flashtex, Light grey



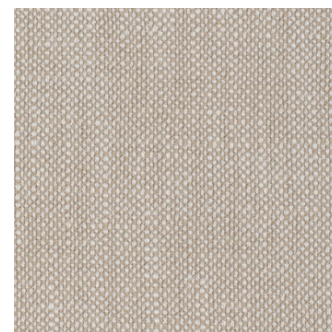
216 Flashtex, Dark Grey



612 Blida, Sand Grey



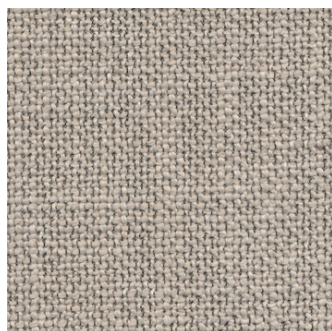
587 Phobos, Mocha



586 Phobos, Latte



358 Taura, Chocco



579 Kenya, Gravel



359 Taura, Cappuccino



411 Esina, Cedar Brown

# Tessuti Innovation Living

Tutti i tessuti sono certificati Oeko-Tex®



688 Silvershine



412 Esina, Rust Orange